



48 Port Empty Patch Panel 19" 2U

Overview

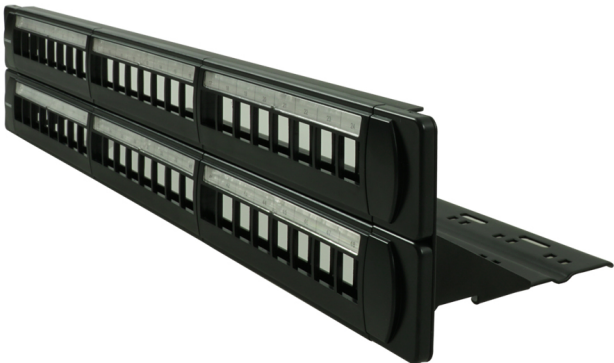
Canovate Patch Panel is an enhanced performance patch panel used for transmission of high speed data, digital and analogue voice and video RGB signals on LANs. It supports Gigabit Ethernet (1000 BASE-T) standard and operates at bandwidths up to 250 MHZ.

Highlights

- 48 port RJ45 jacks
- Contacts are phosphor bronze plated with 50 micro inches hard gold
- Class E (250MHz) acc. to ISO/IEC 11801 and EN50173
- Printed with color code TIA 568A/B, 8 pole LSA terminals
- 19" steel sheet housing

Applications

- 100 Base-TX
- 100 Base-T
- 100VG-Any LAN
- 1000 Base-T (Gigabit Ethernet)
- 1000 Base-TX



Type
48 Port Patch Panel, 2U, Black